

SARS-CoV-2 Papain-like Protease Recombinant Protein

Catalog No: RPES0051

Category: Recombinant Protein

Sequence Information

Species: Virus

Sequence: Glu1564-Val1880

Accession: YP_009725299.1

Mol Mass: 36.79 kDa

Tag: N-His

Bio Activity: Measured by its ability to cleave a fluorogenic peptide substrate, Arg-Leu-Arg-Gly-Gly-AMC (RLRGGAMC). The Specific Activity is >80pmols/min/μg.

Product Information

Synonyms: Papain-like Protease; PLpro; PL-PRO; pp1a; Replicase polyprotein 1a

Source: E.Coli

Purity: > 90% as determined by reducing SDS-PAGE.

Endotoxin: < 1.0 EU per μg as determined by the LAL method.

Formulation: Lyophilized from sterile 20 mM Tris 500mM NaCl, pH 7.4.

Reconstitution: Please refer to the printed manual for detailed information.

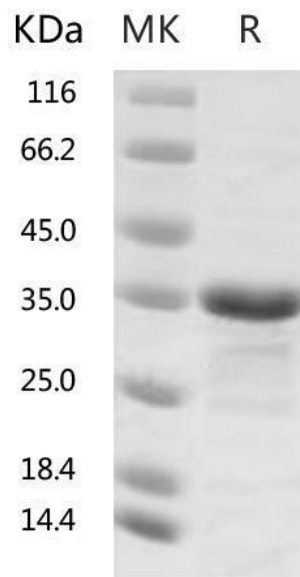
Storage: Lyophilized proteins are stable for up to 12 months when stored at -20 to -80°C. Reconstituted protein solution can be stored at 4-8°C for 2-7 days. Aliquots of reconstituted samples are stable at < -20°C for 3 months.

Shipping: This product is provided as lyophilized powder which is shipped with ice packs.

Background

The coronaviral proteases, papain-like protease (PLpro) and 3C-like protease (3CLpro), are attractive antiviral drug targets because they are essential for coronaviral replication. PLpro has the additional function of stripping ubiquitin and ISG15 from host-cell proteins to aid coronaviruses in their evasion of the host innate immune responses. Targeting PLpro with antiviral drugs may have an advantage in not only inhibiting viral replication but also inhibiting the dysregulation of signaling cascades in infected cells that may lead to cell death in surrounding, uninfected cells.

Image



Contact Details | Dublin, Ireland

Email: techsupport@assaygenie.com | Web: www.assaygenie.com

Copyright © 2020 Reagent Genie, All Rights Reserved. All information / detail is correct at time of going to print.